

## TECHNICAL SPECIFICATION

### TOUCH AC TRIAC RF DIMMER

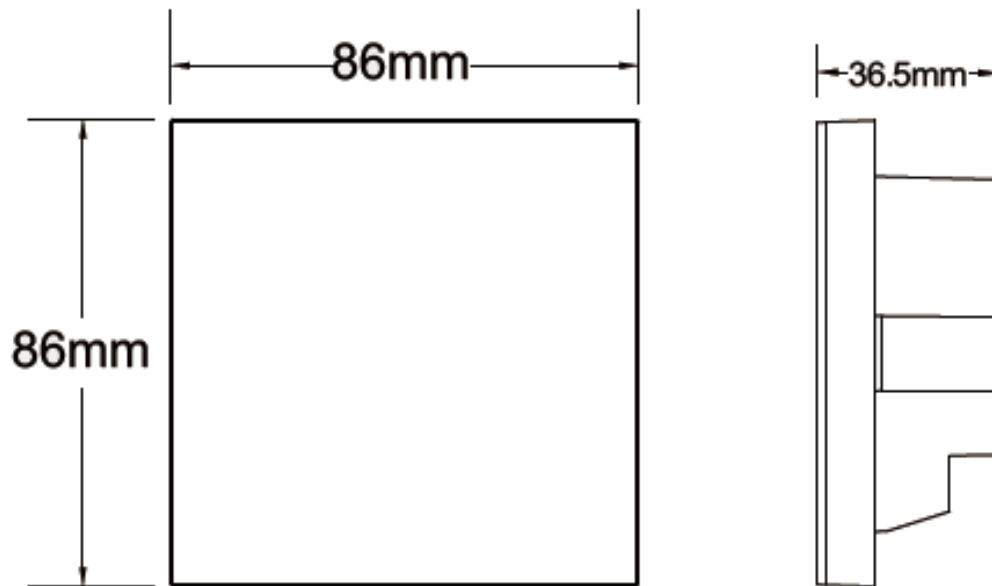


- Triac dimmable and Mosfet dimmable.
- Built in 2.4 GHz module, can be used as RF dimming remoter, remote control more dimming receivers.
- When direct connect dimmable light, great compatibility with a variety of dimming remoter.
- Leading edge dimming or trailing edge dimming set by dip switch.
- Minimum brightness set by dip switch.
- Ultra-sensitive high strength glass touch panel with touch brightness slide in the middle and backlighting.
- To dim and switch single color dimmable LED lamps, traditional incandescent and halogen lights.
- Can work with Wi-Fi-relay controller after install APP on IOS and Android system.

### Technical data:

<b>Input voltage:</b>	100-240VAC
<b>Output voltage:</b>	100-240VAC
<b>Output current:</b>	1.2A
<b>Output power:</b>	100-288W
<b>Remote distance:</b>	30m
<b>Working temperature:</b>	-30°C~55°C
<b>Product size:</b>	L86×W86×H36.5mm
<b>Net weight:</b>	152g
<b>Catalogue number:</b>	99TOUCH1

### Dimensions:



### Panel controller match remoter method:

**Match:** Turn on light, turn off, immediately press on/off key for 5s, within 5s press any key of the remoter.

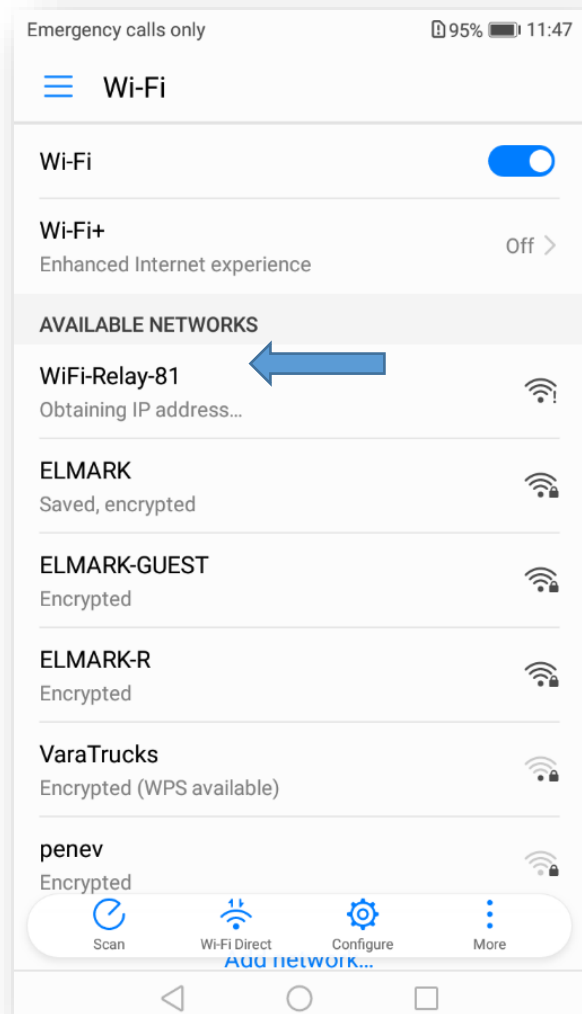
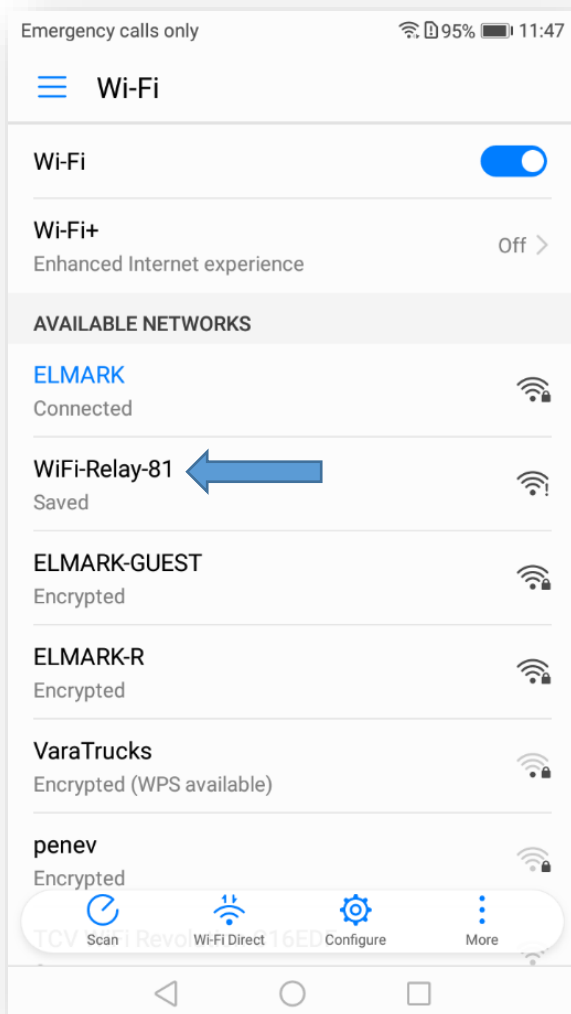
**Delete:** Turn on light, turn off, immediately press on/off key for 10s, delete all matched remote.

## ➤ How to connect TOUCH AC TRIAC RF DIMMER with Wi-Fi devices

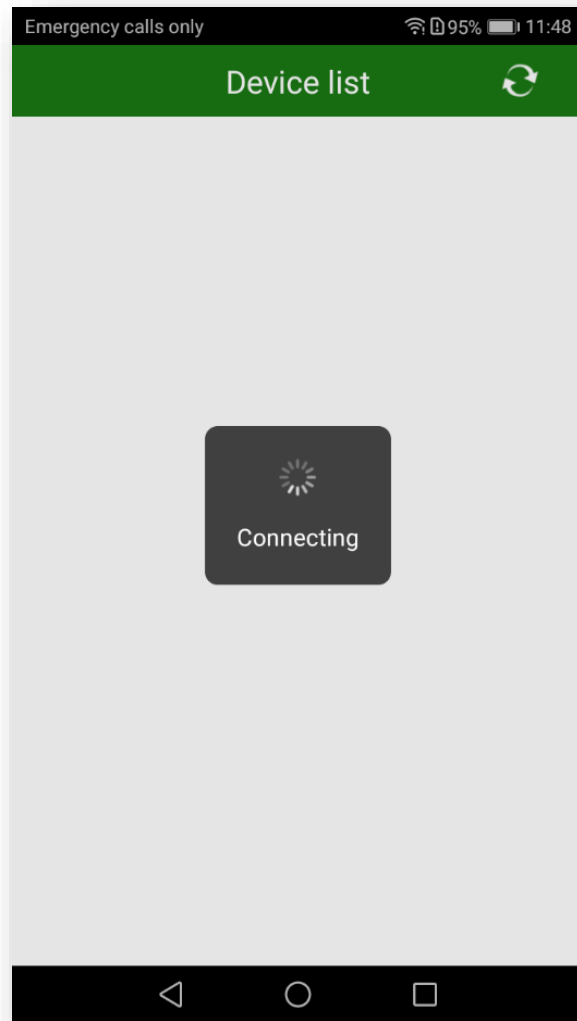
The **TOUCH AC TRIAC RF DIMMER** can work by installed iOS or Android application, via a Wi-Fi relay controller.

How to:

1. Turn on Wi-Fi relay controller.
2. Connecting the Wi-Fi controller to **your** network.



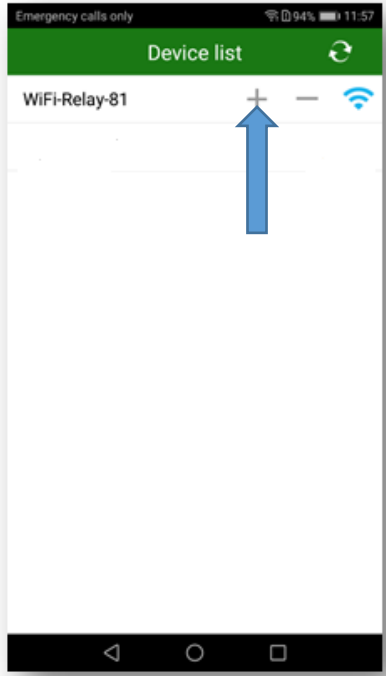
3. Start the “Skydance” app (should be already installed).



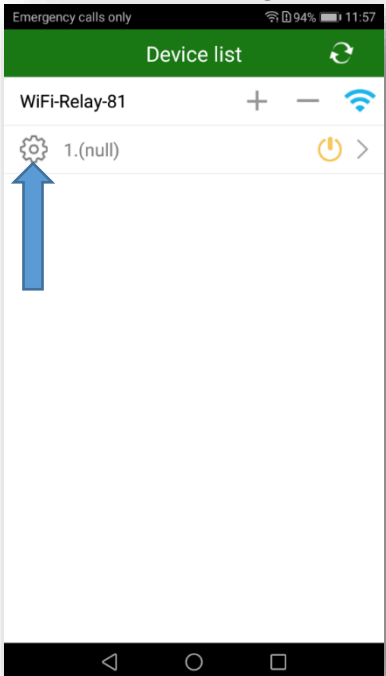
4. Connecting the Wi-Fi relay controller with the **TOUCH AC TRIAC RF DIMMER**

4.1. Select the type of device we will command

» Add a device



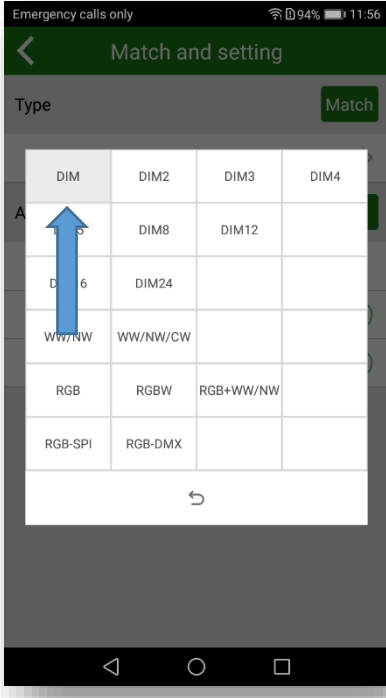
» Settings



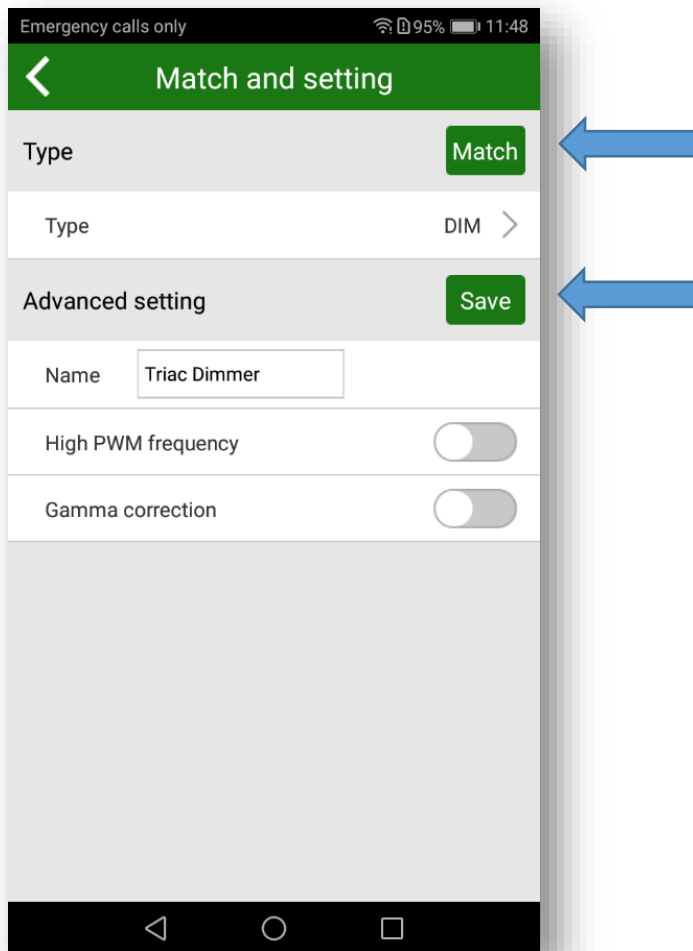
» Drop-down list



» Select



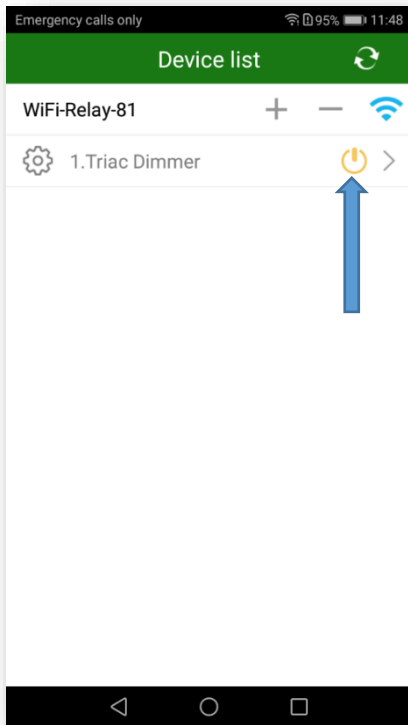
5. Long press the button ON/OFF on the **TOUCH AC TRIAC RF DIMMER** while the light starts flashes and press "Match" on your phone.



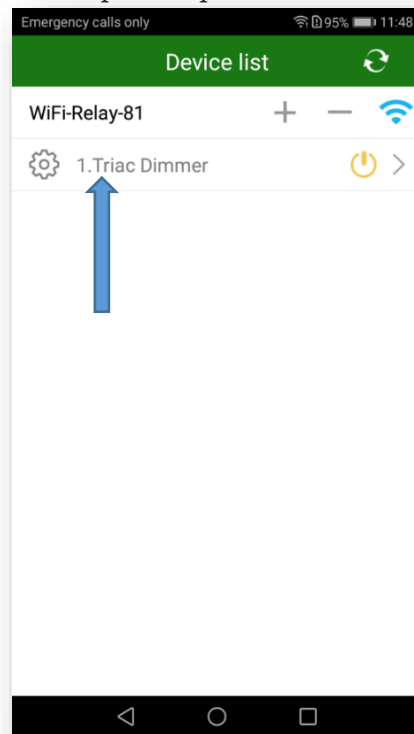
6. Your device is now connected.

## FUNCTIONS:

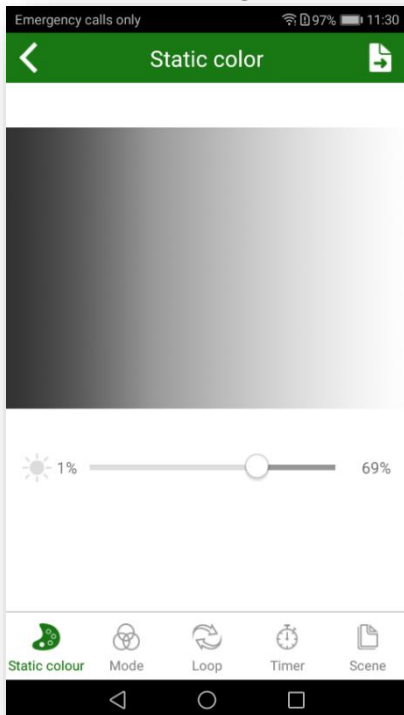
» ON/OFF



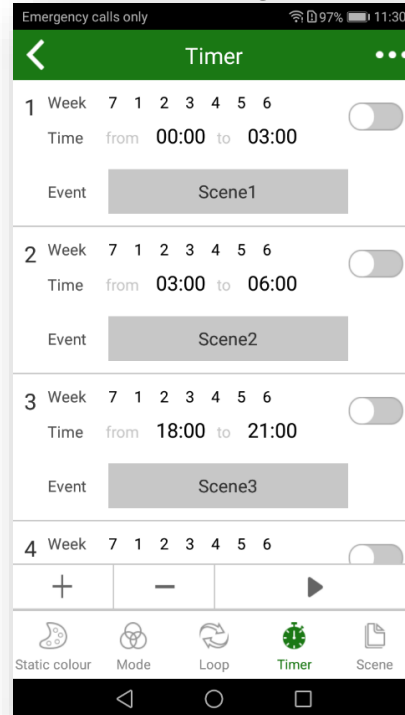
» Open the product menu



» Dimming from 0-100%



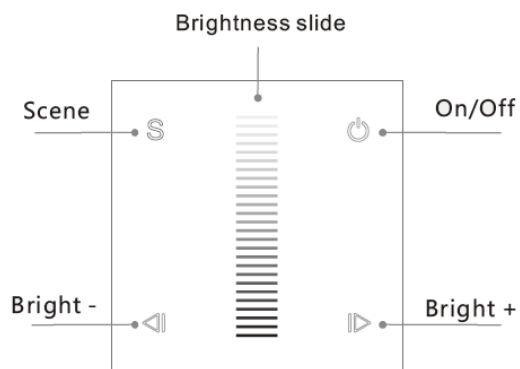
»Timer's settings



» Select predefined scene



## Key function:



**On/Off:** Turn on/off lights.

**Brightness Slide:** Touch to change the brightness.

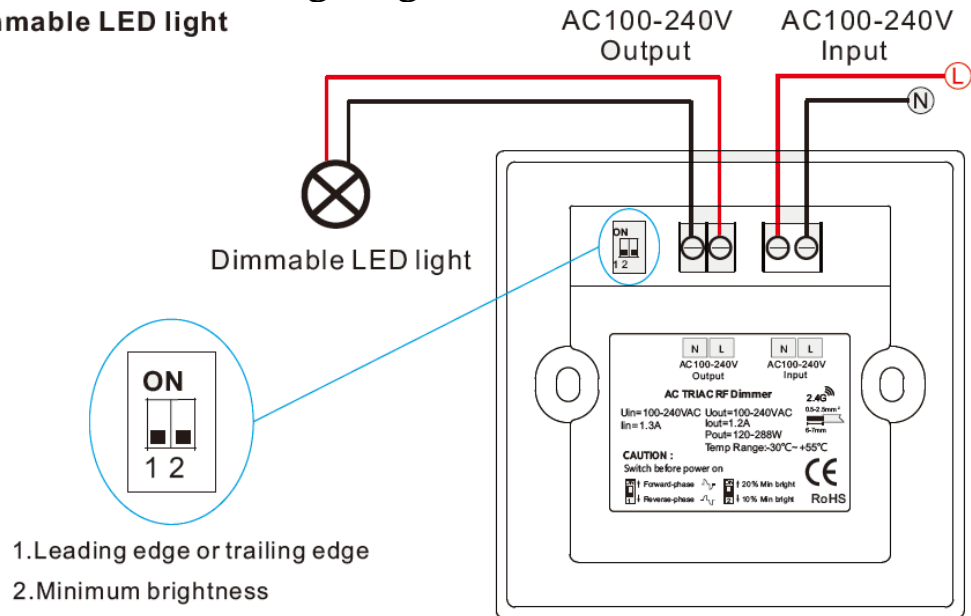
**Bright +/- :** Adjust brightness, short press 10 levels,  
long press 1-5s continuous 256 levels adjustment.

**Scene:** Short press run the scene, long press 2s save.

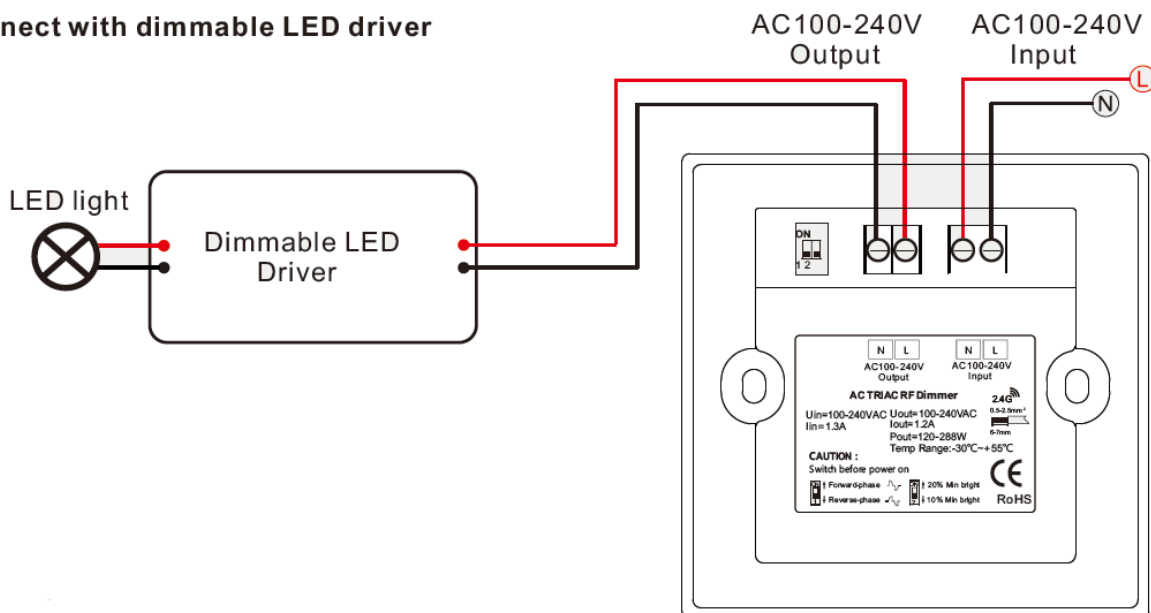


## Wiring diagram:

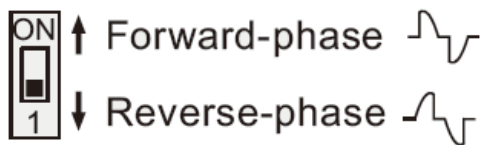
Connect with dimmable LED light



Connect with dimmable LED driver



## Dip switch setting



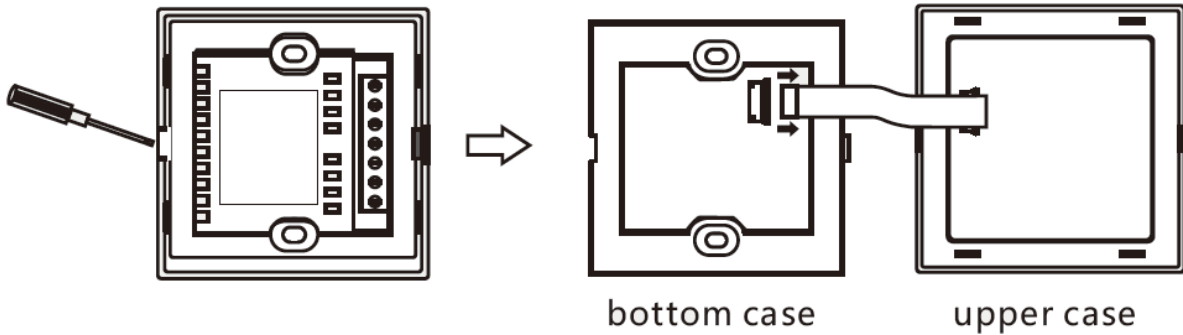
- Select leading edge dimmer or trailing edge dimmer according to your dimmable LED light.

Forward-phase control dimmer (TRIAC)

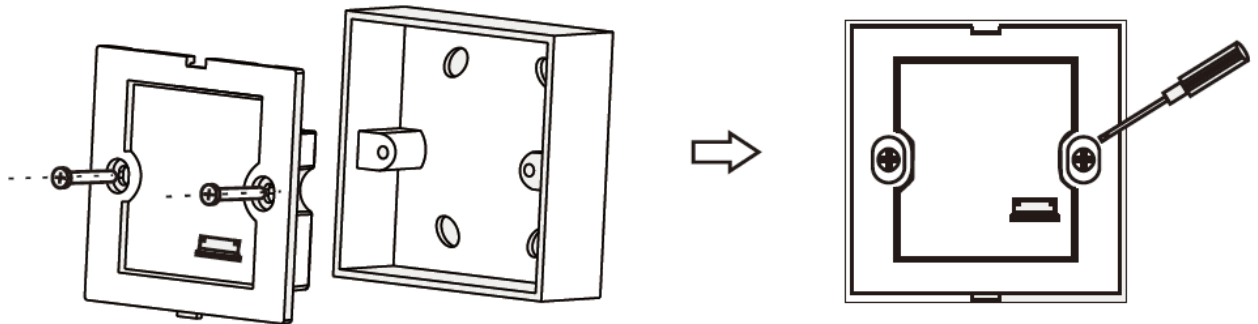
Reverse-phase control dimmer

### Installation diagram:

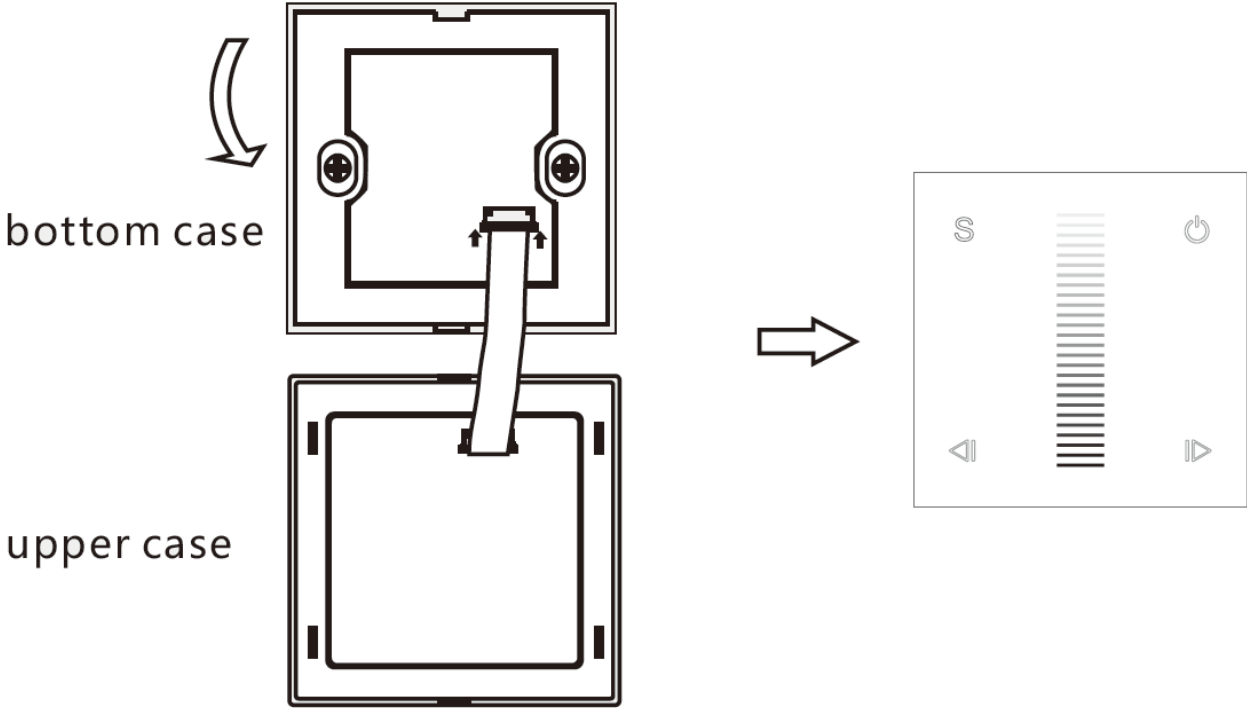
- Flip panel, inserted into the card edge aperture with a small screwdriver, gently try and open the panel. Pull out FPC lock catch, then remove FPC line.



- After connect wires, put bottom case into 86 bottom box, put in the screw and tighten.



- Connect FPC line. Then from top to bottom, moderately cover upper case, complete installation



**NOTES:**

In order to ensure safety, turn off the power first before wiring, ensure correct wiring to avoid short circuit.

- In the process of installation, do not damage or twist FPC line, in order to avoid damage.